

## Database Utilities – Repair/Compact

The facility to maintain your data is included as a part of the package. Over time databases and tables can become corrupted. If problems arise in your system, it is advisable to use this facility to diagnose and to 'self repair' your databases.

A typical error message such "Index out of date" is repaired by using Pro\_Util.

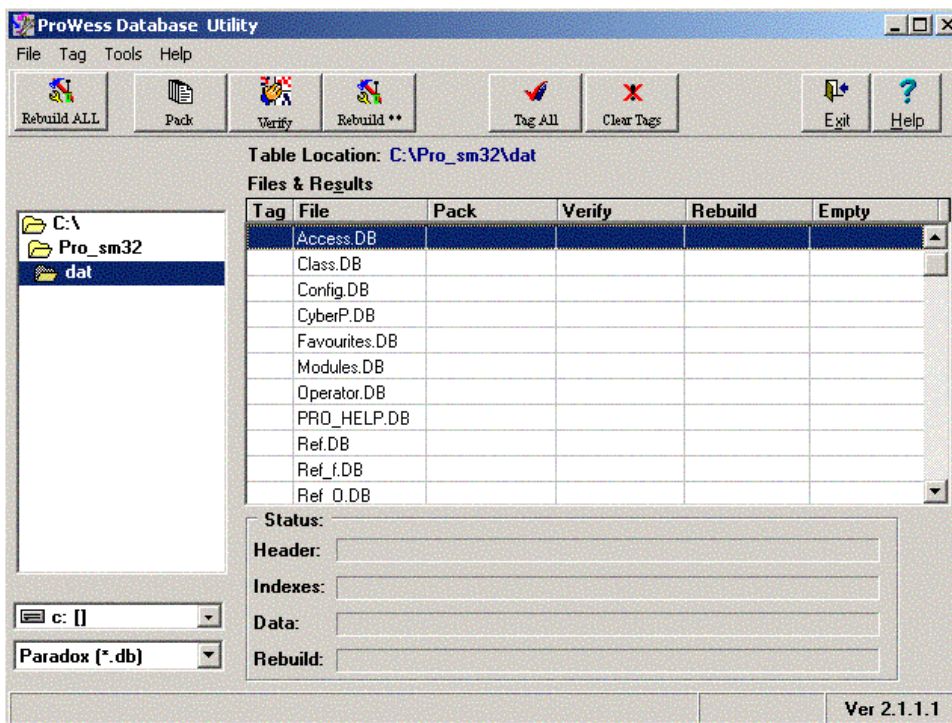
---

### Using Pro\_Util

The stand-alone program Pro\_Util.exe is included as part of the installation. There should be a short cut on your desktop.



The file is stored in your C:\Pro\_SM32 directory and can be accessed from there if the shortcut is not present.



To use this utility you must navigate in the left rectangle to the file that you store your data in. In most cases it will be you C:\Pro\_SM32\dat directory.

When you select the file, the databases (.DB files) in that file will be listed on the right hand side. The process works by re-packaging the databases and indexes. The databases become corrupted over time as large amounts of data are added, deleted and manipulated. Individual or groups of databases can be rebuilt by the use of tagging. 'Rebuild all' tags and rebuilds all the listed files. Individual files can be tagged or untagged by double clicking in the tag column.

The area below this displays bar graphs that indicate the progress the process is making with each database. The time taken to rebuild each database is relative to the size of the database.

#### TIP

\*Pro\_Help.DB and indexes can be very large and is not a necessary system file. Untag it to not rebuild it. This will speed up the rebuild process considerably

The options are to rebuild, pack or verify the database tables. All the databases can be done or it is possible to tag each database (double click in the tag column) to be checked.

The pack option compresses databases by removing unused data. The verify option checks for errors and the rebuild option is a combination of the two in that it recompiles the databases by identifying errors and compressing and repackaging the data.

When you select any of these you will see the process stepping through each database and noting whether it was successful for each database. The use of this utility will allow you to maintain your databases and to fix small problems as they occur.

**Rebuilding all your databases is recommended as a first option trouble shooting solution if errors begin to appear while you are operating DV Coach.**